

MANDATORY DISCLOSURE

I.NAME OF THE INSTITUTION

Allenhouse Institute of technology, Rooma, Kanpur - 208008
Tel. No.:- 09935064111, 0512-2410810, 0512-3290956
www.allenhouse.ac.in

II. NAME & ADDRESS OF THE DIRECTOR

Dr. N. K. Singh
Allenhouse Institute of technology, Rooma, Kanpur - 208008
Phone : 09935147753 (o) / 09415490592 (R)

III. NAME OF THE AFFILIATING UNIVERSITY

Uttar Pradesh Technical University, Lucknow

IV. GOVERNANCE

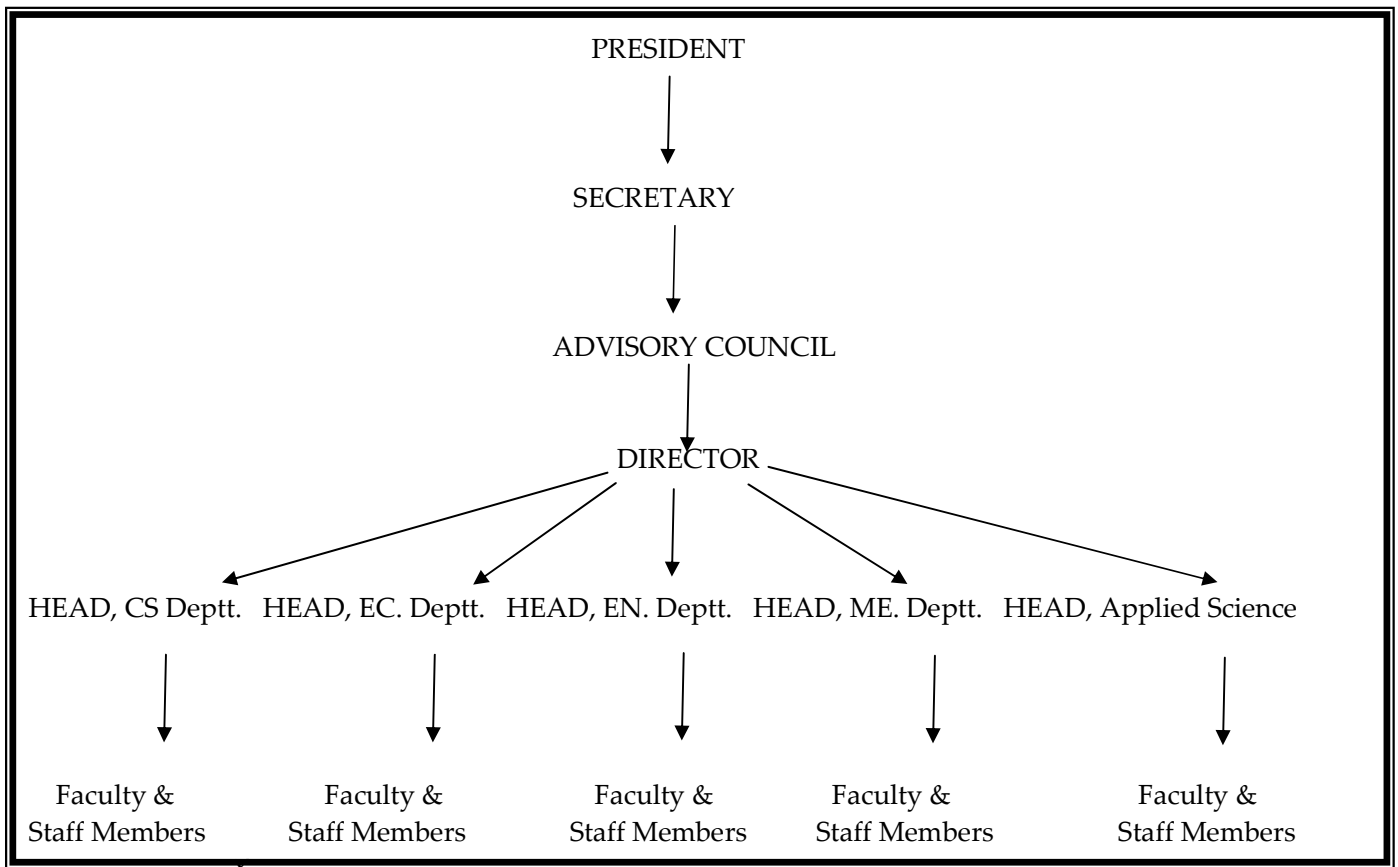
❖ Members of the Board and their brief background

S.no	Name	Nature of Association with the Promoting Body	Background
1.	Mr. Mukhtarul Amin	President	Industrialist
2.	Mr. Zafrul Amin	Secretary	Industrialist
3.	Mrs. Shahina Mukhtar	Member	Business
4.	Mrs. Nausheen Shadab	Member	Business
5.	Mrs. Shada Fatima	Member	Business
6.	Mrs. Zahida Begum	Member	Business
7.	Mrs. Jameela Khatoon	Member	Business

❖ Members of Academic Advisory Body Under Process

❖ Frequency of the Board Meetings and Academic Advisory Body Monthly

❖ **Organizational chart and processes**



- ❖ **Nature and Extent of involvement of faculty and students in academic affairs/improvements** 100%

❖ **Mechanism/Norms & Procedure for democratic/good Governance: -**

We have identified four major elements for good governance.

- 1-Accountability
- 2-predictability
- 3- Transparency
- 4- Participation.

To achieve all these things we are having a full organizational hierarchy consisting of various deans , departmental heads and other committees who are looking after their works very efficiently . Apart from all these things, we are encouraging full students participation in both academic and non-academic affairs.

- ❖ **Student Feedback on Institutional Governance/faculty performance:-** 100%

❖ **Grievance redressal mechanism for faculty, staff and students: -**

To check all the indiscipline acts , we are having a proctorial board.Anyone found ,is subjected to suitable actions .

V. PROGRAMMES

- ❖ **Name of the Programmes approved by the AICTE**

ALL

❖ Name of the Programmes accredited by the AICTE

NIL

❖ For each Programme the following details are to be given:

- Name & Number of seats

Courses	CS	EC	EN	ME
No. Of Seats	60	60	60	60

- Duration 4 Years
- Cut off mark / rank for admission during the last three years 50% in PCM
- Fee 63400/-
- Placement Facilities
Placement cell is to be established.

VI. FACULTY

❖ Branch wise list faculty members:

S.No.	Faculty Name	Qualification
1	Prof. (Dr.) N.K. Singh (Electrical)	Ph.D. (Electrical Eng.)
2	Dr. K.S. Rizvi (Chemistry)	Ph.D.
3	Mr. Kamlesh Shukla (Electrical)	M.Tech. (P)
4	Dr. (Ms.) Neeti Nehru (English)	Ph.D.
5	Ms. Deepika Prasadi (Env. & Eco.)	M.Sc. Ph.D. (Thesis Submitted)
6	Ms. Surabhi Pandey (Math)	M.Sc., Ph.D. (P)
7	Dr. Rajendra Kumar (Physics)	Ph.D.
8	Ms. Supreet Bagga (Electronics)	M. Tech.
9	Ms. Manjari Saxena (Mechanical)	B.Tech.
10	Ms. Poorwa Maheshwari (CS)	B.Tech.
11	Ms. Swati Dheer (Electrical)	B.Tech.
12	Mr. Satyendra Singh (CS)	B.E., M.E.
13	Mr. Ansul (Mechanical)	M.Tech.
14	Mr. Rajesh K. Porwal (Mechanical)	M.Tech. , Ph.D. (P)
15	Dr. (Mrs.) Anjali Porwal (English)	Ph.D.
16	Ms. Deepa Chauhan (Math)	Ph.D. (Thesis Submitted)

17	Mr. Jitendra Singh (Electronics)	M.Tech.
18	Ms. Shalini Singh (CS)	B.Tech.
19	Ms. Nidhi Bajpai (Electronics)	B.Tech.

1. PROFILE OF DIRECTOR / PRINCIPAL WITH QUALIFICATIONS, TOTAL EXPERIENCE, AGE AND DURATION OF EMPLOYMENT AT THE INSTITUTE CONCERNED (Biodata folder)

Name Dr. N. K. Singh

Phone : 09935147753 (o) / 09415490592 (R)

:

Date of Birth : 13.02.1967

:

Academic qualifications (with field of specialization) :

1. Ph. D. (Electrical Engineering) IT BHU
2. B. E. (Electrical Engg)

Details of Experience (Academic / Industrial) :

Total 19.5 years in Industry / Teaching and Research)

Date of the appointment in the present institution 08 / 06 / 2009

VIII. FEE

- ❖ Details of fee, as approved by State fee Committee, for the Institution:
Tuition Fee Rs. 63400/-*

* State fee committee is yet to fix the fee

- ❖ Time schedule for payment of fee for the entire programme: -

MODE OF PAYMENT:-

1. One time payment.(per semester)
2. Two time payment(per year)

- ❖ No. of Fee waivers granted with amount and name of students. N/A
- ❖ Number of scholarship offered by the institute, duration and amount N/A
- ❖ Criteria for fee waivers/scholarship. N/A
- ❖ Estimated cost of Boarding and Lodging in Hostels. Rs. 40000/- per annum

IX. ADMISSION

- ❖ Number of seats sanctioned with the year of approval for 2008-09.

Year	CS	EC	EN	ME
2009	60	60	60	60

- ❖ Number of students admitted under various categories in first year.

year	CS	EC	EN	ME
2009-10	*	*	*	*

* Admission under process as per UPTU guideline

- ❖ Number of applications received for admission under Management Quota and number admitted.

YEAR	RECEIVED	ADMITTED
2009-10	145	36

X. ADMISSION PROCEDURE

- ❖ Mention the admission test being followed, name and address of the Test Agency and its URL (website): -

UPTU (through SEE) and management quota
<http://www.uptu.nic.in>

- ❖ Number of seats allotted to different Test Qualified candidates separately [AIEEE/CET (State conducted test/University tests)/Association conducted test]: -

85% -UPTU (through SEE) and
15% -management quota

❖ **Calendar for admission against management/vacant seats:**

- **Last date for request for applications.** August every year depending upon the counseling by the SEE-UPTU
- **Last date for submission of application.** August every year depending upon the university guidelines in this respect
-
- **Dates for announcing final results.** August every year depending upon the university guidelines in this respect
-
- **Release of admission list (main list and waiting list should be announced on the same day)** Within 2-3 days after announcing results.
- **Date for acceptance by the candidate (time given should in no case be less than 15 days)** Within 15 days after releasing the admission list.
- **Last date for closing of admission.** Last week of August every year depending upon the guidelines by the Government/University in this respect
- **Starting of the Academic session.**
(The waiting list should be activated only on the expiry of date of main list.
First week of September every year subjected to university guidelines for the same.
- **The policy of refund of the fee, in case of withdrawal, should be clearly notified.:-**
Till the admission is not confirmed by the institute, any time student can withdraw his/ her provisional admission with refund of full fee deposited by him/her. After confirmation of the admission and acceptance, no fee shall be refunded in case of withdrawal of admission by the candidate.

XI. CRITERIA AND WEIGHTAGES FOR ADMISSION

- ❖ Describe each criteria with its respective weightages i.e. Admission Test, marks in qualifying examination etc.:

UPSEE 2009

AIEEE

10+2 , Minimum of 50% in PCM

Mention the minimum level of acceptance, if any.

10+2, minimum of 50% in PCM

Item No I-XI must be given in information brochure and must be hosted as fixed content in the website of the institution.

The Website must be dynamically updated with regards to XII-XV.

XII. APPLICATION FORM

- ❖ Downloadable application form, with online submission possibilities.

XIII. LIST OF APPLICANTS

- ❖ List of candidates whose applications have been received along with percentile/percentage score for each of the qualifying examination in separate categories for open seats. List of candidates who have applied along with percentage and percentile score for Management quota seats.
85% of our total admission is made through State Engineering Entrance Examination (SEE-UPTU) through counseling conducted by them according to the merit.

XIV. RESULTS OF ADMISSION UNDER MANAGEMENT SEATS/VACANT SEATS

- ❖ **Composition of selection team for admission under Management Quota with the brief profiles of members (This information be made available in the public domain after the admission process is over)**

Composition of selection team for admission under management quota:

Director, Dean(A), HOD's and Registrar of the college.

XV. INFORMATION ON INFRASTRUCTURE AND OTHER RESOURCES AVAILABLE

LIBRARY:

S.No.	Course(s)	Number of titles of the books	Number of volumes	Journals	
				National	International
1.	B.Tech	1430	5046	33	13

List of online National/International journals subscribed.

In Process

E-Library facilities

Yes

Number of Laboratories and size of each

No.-05, Size-(physics-202.96 sqm), (Chemistry-192.48 sqm), (Mechanics-104.00 sqm), (Electrical-211.95 sqm), (Language Lab- 104.09 sqm),

Number of drawing halls Laboratories and size of each

No.-01, Size-192.48 sqm

Number of Computer Centres with capacity of each

No.-01 Size-153.50 sqm

Central Examination Facility, Number of rooms and capacity of each.

Under Construction

Teaching Learning Process

Curricula and syllabi for each of the programmes as approved by the university.

* As per UPTU syllabus

Academic Calendar of the university

* August or otherwise as per university schedule

Academic Time Table

* Annexure enclosed

Teaching Load of each Faculty

* As per Syllabus

Internal Continuous Evaluation System and place

* Regular tests and assignments for internal assessment

Students' Assessment of faculty, System in place

* Will be entertained before the end of this semester

For each Post Graduate programme give the following :

- i. Title of the programme
- ii. Curricula and syllabi **N/A**
- iii. Faculty profile

S. No.	Name	Designation	Branch	Teaching
1				
2		N/A		
3				

Brief profile of each faculty.

Laboratory facilities exclusive to the PG programme

- Not applicable

Special Purpose

- Software, all design tools in case
- Academic Calendar and frame work
- Research focus
- Not applicable

List of typical research projects :

- Industry linkage
- Publication
- Placement Starts
- Admission procedure
- Fee structure
- Hostel facilities

Contact address of coordinator of the PG programme

Name :

Address :

Telephone :

E-mail :

- Not applicable

Laboratory:

For each Laboratory

List of Major Equipment/ Facilities

List of Experimental Setup

- Annexure Enclosed

COMPUTING FACILITIES :

Number and Configuration of Systems

- 99
- Dual Core,2.2 Ghz, 160 GB,1GB, RAM , TFT,

Total Number of systems connected by LAN

- 99

Total number of systems connected to WAN

- None

Internet bandwidth

- 1 Mbps connectivity 24 hrs
- MSDN, Windows XP, Windows Server 2003, Windows Vista, Windows Server 2008, MS-Office, Linux,

Workshop :

List of facilities available :

A central workshop of more than 900 sqm has been established to provide sufficient space and equipment for all the workshops as per the syllabus like this :

- a> Bench work & fitting
- b> Carpentry
- c> Foundry
- d> Sheet Metal
- e> Smithy
- f> Welding
- g> Machine Shop

Games and Sports Facilities

Outdoor and Indoor games and sports are available

Extra Curricular Activities

Debate and G.K. tests are conducted on monthly basis.

Soft Skill Development Facilities

Communication lab for development for speaking English language has been established

Number of classrooms and size of each

Nos-4., Size-75.64 sqm each

Number of Tutorial rooms and size of each

Nos.-02, size- 56.17 sqm each

❖ **Internal Continuous Evaluation System and place**

Our organization provides a great skill for the up gradation of our students. Doing so, we can prepare our students to cope up with the competitive skill of the market for the external affairs of the industries. We evaluate students by conducting the following:

1. Class tests are being organized by the institute at regular interval of time.
2. Seminars are being presented by the students in our esteemed institute as well as in other organization.
3. Group discussions are conducted on recent and advanced topics/traits.
4. Personality development cells conduct interviews at regular interval of time for the advancement of our students.

❖ **Students assessment of faculty, system in place**

As per the students assessment of the faculty is concerned the director of the institution is personally interacted with the students for the feedback of faculty and also goes through the performance of the students in the class tests and tutorial tests.

Annexure of Major Lab Equipments

List of Physics Lab Equipments

Sr. No.	Description	Qty.
1	Newton's Ring apparatus with sodium light source to determine the wavelength	1
2	Freshnel's Biprism Apparatus	1
3	Half Shade Polarimeter with sodium light source to determine specific rotation of sugar can solution	1
4	Carry Faster Bridge apparatus complete set up	1
5	Stefan's Law trainer kit	1
6	Caliberation of ameter & voltmeter by potentiometer	1
7	To determine the wavelength of spectral lines using plane transmission grating	1
8	To study of energy band gap & diffusion potential of P-N junction	1
9	To Study of viseasity of liquid with complete set up	1
10	Current carrying coil apparatus to determine the variation of magnetic field	1
11	To determine the ballistic constant of a ballistic Galvanometer	1
12	To determine of the ECE of copper using tangent galvanometer	1
13	CRO, Dual channel, 30 MHz	1
14	Digital Multimeter	1
15	Digital Stop Watch	1

List of Electrical Lab Equipments

Sr. No.	Description	Qty.
1	Verification of Kirchhoff's laws	1
2	Verification of Superposition Theorem	1
3	Verification of Thevenin's theorem	1
4	Verification of maximum power transfer	1
5	Measurement of power and power factor in A 1Ph. AC series inductive circuit And Study improvement of Power Factor using Capacitor	1
6	Study of phenomenon of Resonance in RLC series and obtain Resonant Frequency	1
7	Measurement of Power in A 3 Ph. Ckt by two wattmeter Method	1
8	Determination of parameters of AC 1Ph. Series ALC circuit	1
9	Determination of voltage Ratio, polarity, and Efficiency by Load Test of 1 Ph Transformer	1
10	Speed Control of DC Shunt Motor using Armature Voltage Control, Field Flux Control	1
11	Determination of Efficiency of A DC Shunt Motor by load Test	1
12	To Study running and Speed Reversal of a 3 Ph. Induction Motor and Record Speed in both Direction	1
13	To Measure Energy by 1 Ph. Energy Meter and determine error	1
14	To Study P-N Diode Ckts	1
15	SC DC Drive 3 Ph. 60A 415V/ 250V	1
16	DHH Tachometer for Science Lab	2
17	Auto t/f 3 Ph. 5 KVA for science Lab	1
18	Meter and instruments for science lab Voltage MC 150/300V	1

19	Meter and instruments for science lab	2
	Ammeter MC 0-1/2A, 0-10/20A- 1 No. each	
20	CRO , Dual Channel , 30 MHz	2
21	Audio Oscillate	2
22	Function Generator 3 MHz	1
23	Digital Multimeter	2
24	DC Power Supply Scientific Make	1

List of Mechanical Engineering Lab Equipments

Sr. No.	Description	Qty.
1	Universal Testing Machine 40 Ton Capacity with Crompton Greaves Motors, L&T Contactor make (ASI Make)	1
2	Rockwell cum Brinell Hardness Tester Cap. 187.50 KG (ASI Make)	1
3	Pendulum Impact Testing Machine: for Izod & Charpie Tests (ASI)	1
4	2 Stroke Petrol Engine	1
	2 Stroke Diesel Engine	1
	4 Stroke Petrol Engine	1
	4 Stroke Diesel Engine	1
5	Friction Experiments on screw jack	1
	Friction Experiments on inclined Plane	1
6	Simple & Compound gear train experiments	1
7	Worm and Worm-wheel experiments for load lifting	1
8	Belt Pulley Experiments	1
9	Bending of Simply-supported and cantilever beams for theoretical and experimental	1
10	Torsion of rod/wire experiments	1
11	Dynamics of Expt. On collision for determining coefficient of restitution	1
12	Experiment on Moment of Inertia	1

List of Workshop Equipments

Sr. No.	Description	Qty.
1	Lathe Machine : Size 4 -1/2 feet flame Hardened Bed with Norton Gear Box	1 Nos
2	Lathe Machine : Size 6 feet flame Hardened Bed with Norton Gear Box	1 Nos
3	Electric Motor 1 HP 3 phase Slandered (Crompton Greeves)	2 Nos
4	Shapper Machine : Heavy Duty 12" Stroke with Swivelling Vice & Lubrication Pump with Electric Motor 1 HP three phase standard with starter & fitting	1 Nos
5	Hydraulic Hacksaw Machine : Size 7" stroke with Accessories with Electric motor 1 HP three phase with electrical fittings	1 Nos
6	Drill Machine : 1" Heavy Duty	1 Nos
7	Bench Grinder : 8" Size wheel, Heavy duty with good quality, electric Motor, Rotary Speed Switch.	1 Nos
8	Surface Plate with vernier making guage and V block SIZE	1 Nos

List of Chemistry Lab Equipments

Sr. no.	Description	Qty.
1	Single Pan Electronic Balance	1
2	Water Bath S Steel	2
3	Digital Ph. Meter	2
4	Digital Colorimeter	2
5	Meating Mental	2
6	Digital Conductivity Meter	2
7	Oven SS	2
8	Digital Spectrometer	1
9	Redwood Viscometer	1
10	D.M. Plant	1
11	Hot Plate	1
12	Melting Point APP	2
13	Chemical Balance	5
14	Analytical Weight Box	5